

Research Basis of



Review360[®]

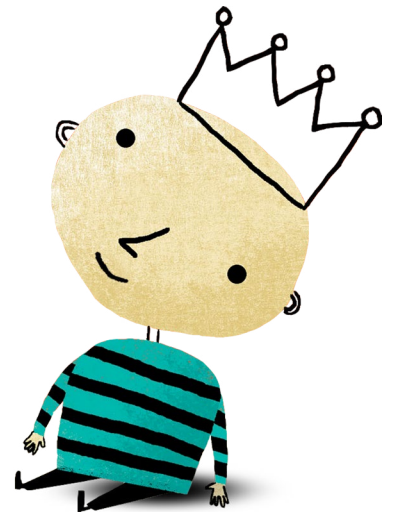
Behavior Matters

A Web-based Behavioral
Support System



Table of Contents

Research Basis of Review360:	1
What is Review360?	2
School-wide Behavioral Support and Intervention	4
Classroom Management	4
Strategies and Interventions for Individualized Behavioral Support	5
Reference List	7
Section 1: Research Basis of Review360	7
Section 2: School-wide Behavioral Support and Intervention	9
Section 3: Classroom Management	14
Section 4: Strategies and Interventions for Individualized Behavioral Support	18
Contact Us	22



Research Basis of Review360:

A Web-enabled Research-based Behavioral Support System

According to the U.S. Department of Education, more than one-third of all students have psychosocial problems that prevent them from fully benefiting from traditional academic instruction (Epstein, M., Atkins, et al., 2008; Adelman, H. & Taylor, L., 2005; Barriga, A., Doran, J., Newell, S., et al., 2002). Most educational policy and organizational efforts have traditionally focused upon improving and modifying curriculum and instructional methods to improve student academic performance. Despite these efforts, traditional curriculum interventions and strategies fall short. These efforts fail to reach the students with the greatest needs and the most challenging behavioral problems. Put simply, behavioral problems keep teachers from teaching well and keep students from becoming healthy successful members of their community upon graduation.

Problem behavior comes at a significant cost to students, teachers, and districts. According to one cost-benefit analysis, schools realized a significant decrease in administrative and personnel expenditures by providing students positive behavior support (Blongien, B., Harbaugh, W., et al.; 2008). The U.S. Department of Education policy underscores the need to address behavior in order to ensure student safety and progress. Efforts, including the Safe and Drug Free Schools initiative in the Elementary and Secondary Education Act (ESEA, 2001), individualized education programs (IEP) in the Individuals with Disabilities Education Act (IDEA), and the Race to the Top Grant program, reflect increasing attention to school climate and student behavior. These policy efforts, along with a greater emphasis upon school climate, reflect a new trend in American education.

Despite increased awareness of student problem behavior, schools continually struggle to systematically implement effective behavior management, apply research-based intervention strategies, and monitor student progress in a comprehensive method that facilitates the application of data driven decision making.

According to No Child Left Behind (NCLB), schools are encouraged to use programs that are developed through the application of “scientifically based research.” Expressly, programs should be founded on research that involves the application of rigorous, systematic, and objective procedures to obtain reliable and valid knowledge relevant to education activities and programs. As a part of the Department of Education, The Institute of Education Sciences (IES) publishes guides that bring the best practices and evidence from scientifically based research together in order to help schools address systemic challenges that cannot be addressed by a single program or intervention. According to the IES Practice Guide, Reducing Behavior Problems in the Elementary School Classroom, (IES, 2008) there are five recommendations on how to help general education teachers reduce the frequency of behavior problems often encountered in public schools.

1. Identify the specifics of the problem behavior and the conditions that prompt and reinforce it. Research suggests that the success of behavioral intervention relies on the identification of problem behaviors and their antecedents and consequences. This allows teachers to focus on the interventions, ensuring that they are effective and efficient.
2. Modify classroom learning environment to decrease problem behavior. Teachers can improve student behavior by matching

individual student interventions with classroom environment, expectations, and instructional practices. Interventions designed to focus on the individual student's needs must be applied in congruence to the context of the classroom.

3. Teach and reinforce new skills to increase appropriate behavior and preserve a positive classroom climate. Research suggests that the most effective way to address problem behaviors is to employ interventions that include appropriate behaviors that students can use to replace poor behaviors.
4. Draw on relationships with professional colleagues and students' families for continued guidance and support. The team approach and collaboration with other educators and parents add to the support that teachers need to successfully help students improve behavior. Behavior is pervasive. Implementing a comprehensive behavioral solution requires the sharing of information through an effective method of communication.
5. Assess whether school-wide behavior problems warrant adopting school-wide strategies or programs; and if so, implement ones shown to reduce negative and foster positive interactions: Classroom teachers benefit from the support of administrators and other school personnel. School-wide behavior programs support positive behavioral improvement by employing a team approach that is aligned in regards to behavioral objectives and goals.

Review360 is a web-enabled program that assists in implementing effective research-based best practices to improve behavioral and academic outcomes for students. It serves to braid two important legislative requirements - Response to Intervention (RTI) and Positive Behavioral Interventions and Supports (PBIS). Most states have adopted RTI and PBIS as Best Practices for intervening early to support students who struggle behaviorally and/or academically, developing tiered levels of support and intervention to address student needs, and monitoring student progress. Both RTI and PBIS requirements call for developing foundational Best Practices at the school and classroom level that are preventative in nature. Review360 assists in the development of a proactive framework at the school and classroom level, as well as providing intensive interventions and monitoring for students requiring more assistance.

What is Review360?

Review360 is designed to conform to the established procedures and guidelines found in education policy regarding the implementation and utilization of research-based interventions and programs. It accomplishes this by taking a systemic and comprehensive approach to providing positive behavioral support which can be aligned to school districts' established approaches to support student behavior. Additionally, Review360 surpasses the standard requirements of research-based interventions by establishing a program that is proactive to the developing needs of educators in the area of student behavior. Review360 establishes itself as a “knowledge product” which is in the forefront of the paradigm shift promoted by education researchers.

Educators are at a quandary of how to address student behavior, improve school climate, and support teachers in maintaining well-managed classrooms. Colleges of Education have done an incomplete job in preparing teachers resulting in insufficient training, experience, and a drought of knowledge about best practices and techniques which deal effectively with disruptive behavior. Additionally, traditional approaches are punitive and remove students from the classroom and/or the campus which detracts from the instructional process while promoting ineffective and reactive actions from teachers. Also, even when research-based and effective interventions are implemented, they are done as stop-gap measures that are incongruent with other campus based procedures and initiatives and are not supported systemwide. The main factor impeding the sustainability of SWPBIS programs is implementation consistency (Sugai & Horner, 2006). “Knowledge Products” like Review360 establish and maintain best

practices in supporting positive student behavior by educating teachers and other campus personnel in the fundamentals of school and classroom management while aligning with current practices and supporting system-wide implementation by allowing for cooperation and sharing of innovative methods. Additionally, by providing real-time data to support communication of student behavior, as well as progress monitoring, Review360 provides the information needed for the data-driven decision making process and the feedback to maintain implementation consistency, establish best practices, and identify program areas or components that need changes and adjustments to improve the efficiency of the program. This constant monitoring and adjusting is a hallmark characteristic of what educational researchers are calling for in “knowledge products” (Morris and Hiebert, 2011).

Review360 is based on systemic implementation of best practices in behavior support that allows for the real-time collection of data that supports the implementation and application of its embedded research-based strategies and interventions. Review360 supports this process by providing on-line professional development for establishing school-wide behavioral expectations, assisting teachers in the process of developing and maintaining best practices in classroom management, and by providing research-based strategies and interventions for students that need individualized support. The implementation of the individualized interventions is supported by on-line professional development. Additionally, by providing real-time data collection, which allows for constant monitoring of implementation as well as behavior progress, the system provides

the foundation for the continual generation of research-based support for the product and its components and processes.

References for the Research Basis of Review360 can be found in Section 1 of the Reference List (pp. 7-8).

School-wide Behavioral Support and Intervention

Review360 aligns its efforts with partner school districts and their campus to facilitate the design and implementation of a discipline management system based on positive behavioral expectations and informed data-driven decision making. The first step is accomplished by providing on-line professional development in concert with the establishment of web-enabled discipline monitoring system. The second step is to supply a framework for the implementation of school-wide preventative and proactive activities to promote positive behavior. The methods recommended are based on research-based practice support by educational research to significantly reduce the occurrence of problem behaviors in school, resulting in a more positive school climate and increased academic performance. These processes and methods include:

- Developing a school-wide behavior support team
- Creating behavioral expectations that are taught and reinforced with all students
- Developing reinforcements and more positive engagement with students.
- Developing procedures for the common areas and systematic supervision of the school environment
- Using school and student data to provide school-wide and individual student interventions

References used in the development of the School-wide Behavioral Support Component of

Review360 can be found in Section 2 of the Reference List (pp. 9-13)

Classroom Management

After a thorough investigation of the educational research literature on Classroom Management, we have identified six research-based core indices of an effective and well-managed classroom:

1. Teaching behavioral expectations
2. Developing procedures and routines
3. Structuring the learning environment
4. Using reinforcement and acknowledgement
5. Improving student/teacher engagement
6. Developing effective correction procedures and strategies

Through the utilization of web-enabled professional development, these components are provided to teachers for them to complete on-line; and supports are available for teachers to use to institute these best practices with their students within the classroom environment.

Completion of teacher training components are recorded in real-time and reported to administrators to facilitate consistency of implementation.

References used in the development of the Classroom Management Component of Review360 can be found in Section 3 of the Reference List (pp. 14–17)

Strategies and Interventions for Individualized Behavioral Support

Review360 assists in implementing effective research-based strategies to improve behavioral and academic outcomes for students. It serves to braid two important legislative requirements - Response to Intervention (RtI) and Positive Behavioral Interventions and Supports (PBIS). Most states have adopted RtI and PBIS as best practices for intervening early to support students who struggle behaviorally and/or academically, developing tiered levels of support and intervention to address student needs, and monitoring student progress to better assess the success of interventions. Both RtI and PBIS requirements call for developing foundational best practices at the school and classroom level that are preventative in nature. Review360 assists in the development of a preventative proactive framework at the school and classroom level as well as providing intensive interventions and monitoring for students requiring more assistance. Review360 assists teachers in addressing serious behavioral issues exhibited by individual students by facilitating the process of identifying these disruptive behaviors, helping teachers promote positive replacement behaviors, and by supplying function driven research-based interventions and strategies through a deliverable method that provides web-based instructional support and professional development in order to implement and sustain best practices.

The function driven research-based strategies and interventions employed by Review360 as positive behavioral supports were developed from Psychological and Educational research literature as well as from best practices gathered from the pragmatic experiences of professionals. We identified the strategies from these sources

based on which practices are most consistently identified with improving student behavior. These strategies represent four classes of interventions:

- Academic Modifications- These strategies function through the modification of instructional practice in order to better address the behavioral needs of the students.
- Modifications of the Classroom Environment- The way that a classroom is organized has a functional impact on student behavior and learning. These strategies help teachers provide the individual student with the optimal learning environment and promote positive behavior.
- Strategies for improving Social Interactions- These research-based interventions are used to improve the social skills of individual students by replacing disruptive social behaviors with positive ones and supporting the development of these new behaviors in the student.
- Contingency-based Behavioral Systems- The strategies used within this function-driven method are based on established best practices for the research-based literature evaluating the impact of positive reinforcement.

Review360 supports the continual evaluation of research-based intervention and strategies in order to maintain their appropriateness and effectiveness; and using this process to establish itself as a “Knowledge Product,” the system employs this feedback to upgrade the sustain in alignment to educational best practices with the most effective methods of improving student behavior. A four-step process is used to ensure that the most effective and relevant research-based interventions and strategies are available for teachers to use with their students:

1. Best practices in the area of behavioral support are collected and developed into straightforward

interventions which teachers can implement with their student;

2. These best practices are organized in alignment with common areas of student behavioral issues (aggression, social/interpersonal, academic difficulties, defiance, hyperactivity/impulsivity, and inattention/disorganization);
3. Review360 allows for the continual evaluation of teachers' perceptions and acceptability of each specific behavioral intervention and strategy used by the system; and
4. Through real-time online progress monitoring, Review360 collects student behavioral performance data which is used to assess the effectiveness of each research-based strategy and intervention.

References used in the development of the Individualized Behavioral Support Component of Review360 can be found in Section 4 of the Reference List (pp. 18-22)

Reference List

Section I: Research Basis of Review360

Adelman, H., & Taylor, L. (2005). *The school leader's guide to student learning supports: New directions for addressing barriers to learning*. Thousand Oaks, CA: Corwin Press

Barriga, Alvaro Q., Doran, Jeffrey W., Newell, Stephanie B., Morrison, Elizabeth M., Barbetti, Victor & Robbins, Brent Dean. (2002). Relationships Between Problem Behaviors and Academic Achievement in Adolescents: The Unique Role of Attention Problems. *Journal of Emotional and Behavioral Disorders*, 10 (4), 233-240.

Blonigen, Bruce A., Harbaugh, William T., Singell, Larry D., Horner, Robert H., Irvin, Larry K., Smolkowski, Keith S. (2008). Application of Economic Analysis to School-Wide Positive Behavior Support (SWPBS) Programs. *Journal of Positive Behavior Interventions*, 10 (1), 5-19.

Boynton, M. & Boynton, C. (2005). *The educator's guide to preventing and solving discipline problems*. Alexandria, VA: Association for Supervision and Curriculum Development.

Epstein, M., Atkins, M., Cullinan, D., Jutash, K., and Weaver, R. (2008). *Reducing Behavior Problems in the Elementary School Classroom: A Practice Guide (NCEE #2008-012)*. Washington, DC: National Center for Education Evaluation and Regional Assistance, Institute of Education Sciences, U.S. Department of Education. Retrieved from <http://ies.ed.gov/ncee/wwc/publications/practiceguides>.

Greenbaum, P. E., Dedrick, R. F., Friedman, R. M., Kutash, K., Brown, E. C., Lardieri, S. P., et al. (1996). National adolescent and child treatment study (NACTS): Outcomes for children with serious emotional and behavioral disturbance. *Journal of Emotional & Behavioral Disorders*, 4(3), 130-146.

Greenwood, C. R., Delquadri, J., & Bulgren, J. (1993). Current challenges to behavioral technology in the reform of schooling: Large-scale, high-quality implementation and sustained use of effective educational practices. *Education and Treatment of Children*, 16(4), 401-404.

Kauffman, J., Lloyd, J., Astuto, T., & Hallahan, D. (1995). Toward a sense of place for special education in the 21st century. *Issues in educational placement: Students with emotional and behavioral disorders* (pp. 379-385). Lawrence Erlbaum Associates, Inc.

Lewis, T., Hudson, S., Richter, M., & Johnson, N. (2004). Scientifically supported practices in EBS: A proposed approach and brief review of current practices. *Behavior Disorders*, 29, 247-259.

Martella, R. C., Nelson, J. R., & Marchand-Martella, N. E. (2003). *Managing disruptive behaviors in the schools: A schoolwide, classroom, and individualized social learning approach*. Boston, MA: Allyn & Bacon.

Masten, A.S., Roisman, G. I., Long, J.D., Burt, K.B., Obradovic, J., Riley, J.R., Boelcke-Stennes, K., Tellegen, A., (2005). Developmental Cascades: Linking Academic Achievement and Externalizing and Internalizing Symptoms Over 20 Years. *Developmental Psychology*, 41(5), 733-746.

Morris, A.K., & Hiebert, J. (2011). Creating Shared Instructional Products: An Alternative to Improving Teaching. *Educational Researcher*, 40 (1), 5-14.

Reynolds, Cecil R. & Shaywitz, Sally E. (2009). Response to Intervention: Ready or Not? Or, From Wait-to-Fail to Watch-Them-Fail. *School Psychology Quarterly*, 24 (2), 130-145.

Stewart, Rachel M., Benner, Martella, Ronald C. & Marchand-Martella, Nancy E. (2007). Three-Tier Models of Reading and Behavior: A Research Review. *Journal of Positive Behavior Interventions*, 9 (1), 239-253.

Sugai, G., Horner, R. (2006) A Promising Approach for Expanding and Sustaining School-Wide Positive Behavior Support. *School Psychology Review*, 35 (2), 245-259.

Sugai, G., Horner, R.H., & Gresham, F.M. (2002). Behaviorally effective school environments. In M. R. Shinn, H. M. Walker, & G. Stoner (Eds.), *Interventions for academic and behavior problems II: Preventive and remedial approaches* (pp. 315–350). Bethesda, MD: National Association of School Psychologists.

Sugai, G., & Horner, R. (2002). Introduction to the special series on positive behavior support in schools. *Journal of Emotional and Behavioral Disorders*, 10(3), 130-135.

Tobin, T. J., (2006). Positive Behavior Support systems: Value added from use of the School Wide Information System. University of Oregon, College of Education, Educational and Community Supports, Eugene. Retrieved November 11, 2000, from <http://uoregon.edu/~ttobin/positive2.pdf>.

Turnbull, H. Rutherford, III, Wilcox, Brennan L., Stowe, Matthew, Raper, Carolyn, & Hedges Laura Penny. (2000). Public Policy Foundations for Positive Behavioral Interventions, Strategies, and Supports. *Journal of Positive Behavior Interventions*, 2 (4), 218-230

Warren, Jared S., Bohanon-Edmonson, Hank M., Turnbull, Ann P. Sailor, Wayne, Wickham, Donna, Griggs, Peter & Beech, Shelly E. (2006). School-wide Positive Behavior Support: Addressing Behavior Problems that Impede Student Learning. *Educational Psychology Review*, (18), 187-198.

Section 2: School-wide Behavioral Support and Intervention

Adelman, H. S., & Taylor, L. (1998). Reframing mental health in schools and expanding school reform. *Educational Psychologist, 33*, 135-152.

Bear, G. G. (1990). Best practices in school discipline. In A. Thomas & J. Grimes (Eds.), *Best practices in school psychology-II*. (pp. 649-663). Washington, DC: National Association of School Psychologists.

Bradshaw, C., Reinke, W., Brown, L., Bevans, K., & Leaf, P. (2008). Implementation of school-wide positive behavioral interventions and supports (PBIS) in elementary schools: Observations from a randomized trial. *Education and Treatment of Children, 31*, 1-26.

Colvin, G., Sugai, G., & Kameenui, E. (1994). *Curriculum for Establishing a Proactive School-Wide Discipline Plan: Special Education Programs (ED/OSERS)*, Washington, DC.

Crone, D. A., & Horner, R. H. (2003). *Building positive behavior support systems in schools*. New York, London: Guilford Press.

Crone, D. A., Horner, R. H., & Hawken, L. S. (2004). *Responding to problem behavior in schools: The behavior education program*. New York: Guilford Press.

Drasgow, E., Yell, M. L., Bradley, R., & Shriner, J. G. (1999). The IDEA Amendments of 1997: A School-Wide Model for Conducting Functional Behavioral Assessments and Developing Behavior Intervention Plans. *Education and Treatment of Children, 22*(3), 244-266.

Fanning, P., Theodos, J., Benner, C., & Bohanon-Edmonson, H. (2004). Integrating proactive discipline practices into codes of conduct. *Journal of School Violence, 3*(1), 45-61

Flannery, K. Brigid, Sugai, George, & Anderson, Cynthia, M. (2009). School-Wide Positive Behavior Support in High School: Early Lessons Learned. *Journal of Positive Behavior Interventions 2009, 11* (3), 177-185.

Gottfredson, D. C. (1987). An Evaluation of an Organization Development Approach to Reducing School Disorders. *Evaluation Review, 11*(6), 739-763.

Gottfredson, G. D., & Gottfredson, D. C. (1996). A national study of delinquency prevention in schools: Rationale for a study to describe the extensiveness and implementation of programs to prevent adolescent problem behavior in schools. Ellicott City, MD: Gottfredson Associates, Inc.

Hawken, Leanne S., MacLeod, K. Sandra, & Rawlings, Linda. (2007). Effects of the Behavior Education Program (BEP) on Office Discipline Referrals of Elementary School Students. *Journal of Positive Behavior Interventions, 9* (2), 94-107.

Horner, R. H., & Sugai, G. (2000). School-wide behavior support: An emerging initiative (special issue). *Journal of Positive Behavioral Interventions, 2*, 231-233.

Horner, R. H., & Sugai, G. (2001). "Data" need not be a four-letter word: Using data to improve schoolwide discipline. *Beyond Behavior, 11*(1), 20-22.

- Horner, R. H., Sugai, G., & Horner, H. F. (2000). A school-wide approach to student discipline. *The School Administrator*, 2(57), 20-23.
- Horner, R. H., Sugai, G., Lewis-Palmer, T., & Todd, A. W. (2001). Teaching school-wide behavioral expectations. *Report on Emotional & Behavioral Disorders in Youth*, 1(4), 77-79.
- Hyman, I., Flanagan, D., & Smith, K. (1982). Discipline in the schools. In C. R. Reynolds & T. B. Gutkin (Eds.), *The handbook of school psychology*. (pp. 454-480). New York: Wiley.
- Irvin, L.K., Horner, R.H., Ingram, K., Todd, A.W., Sugai, G., Sampson, N., & Boland, J. (2006). Using office discipline referral data for decision-making about student behavior in elementary and middle schools: An empirical investigation of validity. *Journal of Positive Behavior Interventions*, 8(1), 10-23.
- Irvin, L.K., Tobin, T., Sprague, J., Sugai, G. and Vincent, C. (2004). Validity of office discipline referral measures as indices of school-wide behavioral status and effects of school-wide behavioral interventions. *Journal of Positive Behavioral Interventions* 6(5), 131-147.
- Kartub, D.T., Taylor-Greene, S., March R.E., Horner, R.H. (2000) Reducing hallway noise: A systems approach. *Journal of Positive Behavior Interventions*, 2(3), 179-182.
- Kazdin, A. E. (1982). Applying behavioral principles in the schools. In C. R. Reynolds & T. B. Gutkin (Eds.), *The handbook of school psychology*. (pp. 501-529). New York: Wiley.
- Knoff, H. (2000). Organizational development and strategic planning for the millennium: A blueprint toward effective school discipline, school safety, and crisis prevention. *Psychology in the Schools*, 37, 17-32.
- Knoff, H. M. (1985). Best practices in dealing with discipline referrals. In A. Thomas & J. Grimes (Eds.), *Best practices in school psychology*. (pp. 251-262). Washington, DC: National Association of School Psychologists.
- Lane, Kathleen Lynne, Wehby, Joseph H., Robertson, Jemma & Rogers, Leslie Ann. (2007). How Do Different Types of High School Students Respond to Schoolwide Positive Behavior Support Programs? *Journal of Emotional and Behavioral Disorders*, 15 (1), 3-20.
- Lassen, S., Steele, M., Sailor, W. (2006) The Relationship of School-Wide Positive Behavior Support to Academic Achievement in an Urban Middle School. *Psychology in the Schools*, 43(6), 701-712.
- Lewis, T. J, Sugai, G., & Colvin, G. (1998). Reducing problem behavior through a school-wide system of effective behavioral support: Investigation of a school-wide social skills training program and contextual interventions. *School Psychology Review*, 27, 446-459.
- Lewis, T. J. (2001). Building infrastructure to enhance schoolwide systems of positive behavioral support: Essential features of technical assistance. *Beyond Behavior*, 11(1), 10-12.
- Lewis, T. J., & Daniels, C. (2000). Rethinking School Discipline through Effective Behavioral Support. *Reaching Today's Youth: The Community Circle of Caring Journal*, 4(2), 43-47.
- Lewis, T. J., & Sugai, G. (1999). Effective behavior support: A systems approach to proactive school-wide management. *Focus on Exceptional Children*, 31(6), 1-24.

Lewis-Palmer, T., Sugai, G., & Larson, S. (1999). Using data to guide decisions about program implementation and effectiveness. *Effective School Practices*, 17(4), 47-53.

Lohrmann-O'Rourke, S., Knoster, T., Sabatine, K., Smith, D., Horvath, G., & Llewellyn, G., (2000). School-wide Application of PBS in the Bangor Area School District. *Journal of Positive Behavior Interventions*, 2(4). 238-240.

Luiselli, J. K., Putnam, R. F., Handler, M. W., & Feinberg, A. B. (2005). Whole-School Positive Behaviour Support: Effects on student discipline problems and academic performance. *Educational Psychology* 25(2-3), 183-198

Luiselli, J., Putnam, R., & Sunderland M. (2002). Longitudinal evaluation of behavior support interventions in public middle school. *Journal of Positive Behavior Interventions*, 4 (3), 182-188.

Luiselli, J. K., Putnam, R. F., & Handler, M. W. (2001). Improving discipline practices in public schools: Description of a whole-school and district-wide model of behavior analysis consultation. *The Behavior Analyst Today*, 2(1), 18-26.

Mayer, G. R., Butterworth, T., Nafpaktitis, M., & Suzer-Azaroff, B. (1983). Preventing school vandalism and improving discipline: A three year study. *Journal of Applied Behavior Analysis*, 16, 355-369

Mayer, G. R. (2002). Behavioral Strategies To Reduce School Violence. *Child and Family Behavior Therapy*, 24(1-2), 83-100.

Mayer, R. G. (1998). Constructive discipline for school personnel. *Education and Treatment of Children*, 22, 36-54.

McIntosh, K., Chard, D., Boland, J. & Horner, R. (2005). Demonstration of Combined Efforts in School-Wide Academic and Behavioral Systems and Incidence of Reading and Behavior Challenges in Early Elementary Grades. *Journal of Positive Behavior Interventions*, 8 (3), 146-154.

McIntosh, K., Chard, D., Boland, J., & Horner, R. (2006). A demonstration of combined efforts in school-wide academic and behavioral systems and incidence of reading and behavior challenges in early elementary grades. *Journal of Positive Behavior Interventions*. 8(3). 146-154.

Metzler, C.; Biglan, A., Rusby, J. , Sprague, J. (2001) Evaluation of a Comprehensive Behavior Management Program to Improve School-Wide Positive Behavior Support. *Education & Treatment of Children*, 24 (4), 448-479.

Muscott, Howard S., Mann, Eric L. & LeBrun, Marcel R. (2008). Positive Behavioral Interventions and Supports in New Hampshire: Effects of Large-Scale Implementation of Schoolwide Positive Behavior Support on Student Discipline and Academic Achievement. *Journal of Positive Behavior Interventions* 10 (3), 190-205.

Nelson, J. R. (1996). Designing schools to meet the needs of students who exhibit disruptive behavior. *Journal of Emotional and Behavioral Disorders*, 4, 147-161.

- Nelson, J. R., Colvin, G., & Smith, D. J. (1996). The effects of setting clear standards on students' social behavior in common areas of the school. *The Journal of At-Risk Issues*, Summer/Fall, 10-17.
- Nelson, J. R., Martella, R., & Galand, B. (1998). The Effects of Teaching School Expectations and Establishing a Consistent Consequence on Formal Office Disciplinary Actions. *Journal of Emotional and Behavioral Disorders*, 6(3), 153-161.
- Nelson, J. R., Martella, R. & Marchand-Martella, N. (2002). Maximizing student learning: The effects of a comprehensive school-based program for preventing problem behaviors. *Journal of Emotional and Behavioral Disorder*, 10(3), 136-148.
- Safran, S. P. (2006). Using the Effective Behavior Supports Survey to guide development of school-wide positive behavior support. *Journal of Positive Behavior Support*, 8, 3-9.
- Safran, S. P. & Oswald, K. (2003). Positive behavior supports: Can schools reshape disciplinary practices? *Exceptional Children*, 69, 361-373
- Schneider, T., Walker, H., & Sprague, J. (2000). *Safe school design: A handbook for educational leaders*. ERIC Clearinghouse on Educational Management. University Oregon, Eugene.
- Scott, T. M., & Hunter, J. (2001). Initiative schoolwide support systems: An administrator's guide to the process. *Beyond Behavior*, 11(1), 13-15.
- Scott, T. M. & Martinek, George. (2006). Coaching Positive Behavior Support in School Settings. *Journal of Positive Behavior Interventions*, 8 (3), 165-173.
- Sherrod Maria Dunn, Getch, Yvette Q., Ziomek-Daigle, Jolie. (2009). The Impact of Positive Behavior Support to Decrease Discipline Referrals with Elementary Students. *Professional School Counseling*, 12 (1), 421-427.
- Skiba, R. J., Peterson, R. L., & Williams, T. (1997). Office referrals and suspensions: Disciplinary intervention in middle schools. *Education and Treatment of Children*, 20, 295-315.
- Skiba, R. J., & Peterson, R. L. (2000). School discipline at a crossroads: From zero tolerance to early response. *Exceptional Children*, 66, 335-347.
- Sprague, J. R., & Horner, R. H. (2006). Schoolwide positive behavior supports. In S. R. Jimerson & M. Furlong (Eds.), *Handbook of school violence and school safety: From research to practice*. Mahway, N.J.
- Sprague, J. R., & Walker, H. M. (2004). *Safe and healthy schools: Practical prevention strategies*. New York: Guilford Press.
- Sprick, R., Sprick, M., & Garrison, M. (1992). *Foundations: Developing positive school-wide discipline policies*. Longmont, CO: Sopris West.
- Sugai, G. M. (1992). The design of instruction and the proactive management of social behaviors. *Learning Disabilities Forum*, 17(2), 20-23.
- Sugai, G., Horner, R. H., & Gresham, F. (2002). Behaviorally effective school environments. In M. R. Shinn, G. Stoner, & H. M. Walker (Eds.), *Interventions for academic and behavior problems: Preventive and remedial approaches*. National Association of School Psychologists. Silver Spring, MD.

Sugai, G., & Pruitt, R. (1993). Phases, steps, and guidelines for building school-wide behavior management programs: A practitioner's handbook. Behavior Disorders Handbook No. 1. Behavior Disorders Program. University of Oregon. Eugene.

Sugai, G., Sprague, J. R., Horner, R. H., & Walker, H. M. (2000). Preventing school violence: The use of office discipline referrals to assess and monitor school-wide discipline interventions. *Journal of Emotional and Behavioral Disorders*, 8, 94-101.

Sugai, G., & Tindal, G. (1993). Effective school consultation: An interactive approach. Pacific Grove, CA: Brooks/Cole.

Sugai, G., & Horner, R. (2002). The evolution of discipline practices: School-wide positive behavior supports. *Child & Family Behavior Therapy*, 24(1), 23-50.

Taylor-Greene, S., Brown, D., Nelson, L., Longton, J., Gassman, T., Cohen, J., Swartz,

J., Horner, R. H., Sugai, G., & Hall, S. (1997). School-wide behavioral support:

Starting the year off right. *Journal of Behavioral Education*, 7, 99-112.

Todd, A. W., Horner, R. H., Sugai, G., & Sprague, J. R. (1999). Effective behavior support: Strengthening school-wide systems through a team-based approach. *Effective School Practices*, 17(4), 23-37.

Turnbull, A., Edmonson, H., Griggs, P., Wickham, D., Sailor, W., Freeman, R., Guess, D., Lassen, S., McCart, A., Park, J., Riffel, L., Turnbull, R., & Warren, J. (2002). A blueprint for schoolwide positive behavior support: Implementation of three components. *Exceptional Children*, 68(3), 377-402.

VanDover, Teresa (1995). *A Principal's Guide to Creating a Building Climate for Inclusion*. The Master Teacher Inc., Manhattan, KS.

Zins, J. E., & Ponti, C. R. (1990). Best practices in school-based consultation. In A. Thomas and J. Grimes (Eds.), *Best practices in school psychology -- II* (pp.673-694). Washington, DC: National Association of School Psychologists.

Section 3: Classroom Management

Albin, R. W., Luchyshyn, J. M., Horner, R. H., & Flannery, K. B. (1996). Contextual fit for behavioral support plans: A model for "goodness of fit." In L. Koegel, R. Koegel, & G. Dunlap (Eds.), *Positive behavioral support: including people with difficult behavior in the community* (pp. 81-96). Baltimore, MD: Paul HI Brookes.

Anderson, C. M., & Spaulding, S. A. (2007). Using positive behavior support to design effective classrooms, *Beyond Behavior*, 16(2), 27-31.

Bobrow, A., (2002). Problem Behaviors in the Classroom: What They Mean and How to Help. *Child Study Center*, 7(2), Nov/Dec.

Brookhart, Susan M. (2008). *How to Give Effective Feedback to Your Students*. Alexandria, VA: Association for Supervision and Curriculum Development.

Clarke, S., Dunlap, G., Foster-Johnson, L., Childs, K.E., Wilson, D., White, R., and Vera, A. (1995). Improving the conduct of students with behavioral disorders by incorporating student interests into curricular activities. *Behavioral Disorders*, 20, 221-237.

Colvin, G., & Lazar, M. (1997). *The effective elementary classroom: Managing for success*. Longmont, CO: Sopris West.

Colvin, G., Kameenui, E. J., & Sugai, G. (1993). School-wide and classroom management: Reconceptualizing the integration and management of students with behavior problems in general education. *Education and Treatment of Children*, 16, 361-381.

Cornelius-White, J. *Learner-Centered Teacher-Student Relationships Are Effective: A Meta-Analysis*. *Review of Educational Research*. March 2007. Vol. 77, 113-143

Darch, C. B., & Kameenui, E. J. (2003). *Instructional classroom management: A proactive approach to behavior management*. (2nd ed.). White Plains, NY: Longman.

DeBruyn, Robert L., and Larson, Jack L. (1984). *You Can Handle Them All*. Manhattan, KS: The Master Teacher.

Dowd, T., Criste, A., Nelson, C., Tobias, L. (1995) *The Well Managed Classroom*. Boys Town Press, Boys Town, NE.

Dunlap, G., White, R., Vera, A.G., Wilson, D., & Panacek, L. (1996). The effects of multi-component, assessment-based curricular modifications on the classroom behavior of children with emotional and behavioral disorders. *Journal of Behavioral Education*, 6, 481-500.

Elias, M., Zins, J., Weissberg, R., Frey, K., Greenberg, M., Haynes, N., Kessler, R., Schwab-Stone, M., & Shriver, T. (1997). *Promoting Social and Emotional Learning*. Alexandria, VA: Association for Supervision and Curriculum Development.

Evertson, C., Emmer, E., & Worsham, M. (2006). *Classroom management for elementary teachers*. Boston, MA: Pearson Education, Inc.

Evertson, C., & Harris, A., (1992) *What We Know About Managing Classrooms*. *Educational Leadership*, 49, 74-78.

- Fairbanks, S., Sugai, G., Guardino, D., & Lathrop, M. (2007). Response to intervention: Examining classroom behavior in second grade. *Exceptional Children*, 73, 288-310.
- Fay, J. and Funk, D. (1995). *Teaching with Logic and Love: Taking Control of the Classroom*; The Love and Logic Press, Inc.
- Freeman, R. L., Britten, J., McCart, A., Smith, C., & Sailor, W. (2000). Classroom Management (Module 6, Lesson 3) Redesigning Environments [Online]. Lawrence, KS: Kansas University Affiliated Program, Center for Research on Learning. Available: Onlineacademy.org.
- Garrett, T., Barr, J., Rothman, T. (2009) Perspectives on caring in the classroom: do they vary according to ethnicity or grade level? *Adolescence* 44(175) 505-21
- Gingras-Fitzell, Susan (2010). *Co-teaching & Collaboration in the Classroom*. Aim High Education, Manchester, NY.
- Gootman, Marilyn E. (2008). *The Caring Teacher's Guide to Discipline*. Thousand Oaks, CA: Corwin Press
- Hardin, C. (2004). *Effective classroom management: models and strategies for today's classrooms*. Upper Saddle River, NJ: Pearson Education, Inc.
- Henly, M. (2010). *Classroom management: a proactive approach*. Upper Saddle River, NJ: Pearson Education, Inc.
- Jones, Fred. (2000). *Tools for Teaching*. Santa Cruz, CA: Frederic H. Jones and Associates, Inc.
- Jones, V. F. & Jones, L. S. (2001). *Comprehensive classroom management: Creating communities of support and solving problems* (6th ed.). Boston: Allyn & Bacon.
- Kameenui, E. J., & Carnine, D. W. (2002). *Effective teaching strategies that accommodate diverse learners* (2nd ed.). Upper Saddle River, NJ: Merrill.
- Kauffman, Mostert, Trent, and Hallahan (1998). *Managing Classroom Behavior: A reflective case-based approach* 2nd ed. Boston: Allyn and Bacon.
- Kennedy, C. H., Long, T., Jolivet, K., Cox, J., Tang, J. & Thompson, T. (2001) Facilitating general education participation students with behavior problems by linking positive behavior supports and person-centered planning. *Journal of Emotional and Behavioral Disorders*, 9, 161-171.
- Kern, L., & Dunlap, G. (1998). Curricular modifications to promote desirable classroom behavior. In J. K. Luiselli & M. J. Cameron (Eds.), *Antecedent control: Innovative approaches to behavioral support* (289-307). Baltimore, MD: Paul H. Brookes.
- Kerr, M. M., & Nelson, C. M. (1998). *Strategies for managing problem behaviors in the classroom* (3rd ed.). Columbus, OH: Merrill.
- Kerr, M. M., & Nelson, C. M. (2006). *Strategies for addressing behavior problems in the classroom* (5th ed.). Upper Saddle River, NJ: Prentice Hall.
- Lambert, N. M. (1995). Seating arrangements. In L. W. Anderson (Ed.) *International encyclopedia of teaching and teacher education* (2nd ed.) Oxford: Elsevier Science.

- Lewis, T. J., Garrison-Harrell, L. (1999). Effective behavior support: Designing setting specific interventions. *Effective School Practices*, 17, 38-46.
- Marr, M. B., Audette, B., White, R., Ellis, E., & Algozzine, B. (2002). School-Wide Discipline and Classroom Ecology. *Special Services in the Schools*, 18(1-2), 55-73.
- Marzano, Robert J. (2003). *What Works in Schools: Translating Research into Action*. Alexandria, VA: Association for Supervision and Curriculum Development.
- Marzano, Robert J, Marzano, Jana S., and Pickering, Debra J. (2003). *Classroom Management that Works: Research-Based Strategies for Every Teacher*. NJ: Pearson
- Marzano, Robert J, Pickering, Debra J., and Pollock, Jane E. (2001). *Classroom Management that Works: Research-Based Strategies for increasing Student Achievement*. Alexandria, VA: Association for Supervision and Curriculum Development.
- Muscott, Howard, S. (1996). Special education teachers' standards for the classroom behavior of students with behavioral disabilities across a variety of cascade placements. *Education and Treatment of Children*, 19(3), 300-316.
- Nelson, J. R., Johnson, A., & Marchand-Martella, N. (1996). Effects of direct instruction, cooperative learning, and independent learning practices on the classroom behavior of students with behavioral disorders: A comparative analysis. *Journal of Emotional and Behavioral Disorders*, 4, 53-62.
- Paine, S. C., Radicchi, J., Rosellini, L. C., Deutchman, L., & Darch, C. B. (1983). *Structuring your classroom for academic success*. Champaign, IL: Research Press.
- Powell, R., McLaughlin, H. J., Savage, T., & Zehm, S. (2000) *Classroom Management: Perspectives on the Social Curriculum*; Merrill Prentice Hall
- Putnam R.F, and Handler, M.H. Classwide behavior support. (in press). in Anderman, Eric (ed.). *Psychology of Classroom Learning: An Encyclopedia*, Detroit: Macmillan Reference USA.
- Richey, D., & Wheeler, J. (2010). *Behavior management: principles and practices of positive behavior supports*. Columbus, OH: Pearson Education, Inc.
- Scott, T. M., & Nelson, C. M. (1999). Using functional behavioral assessment to develop effective intervention plans: Practical classroom applications. *Journal of Positive Behavior Interventions*, 1, 242-251.
- Seivert, T. (2008) *Classroom arrangement: Alternative Style Classrooms*. Huntington College, Huntington, Indiana.
- Sapon-Shevin, Mara. (1999). *Because We Can Change the World: A Practical Guide to Building Cooperative, Inclusive Classroom Communities*. Needham Heights, MA: Allyn & Bacon.
- Smith, T., Polloway, E., Patton, J., and Dowdy, C. (2003). *Teaching Students with Special Needs in Inclusive Settings Fourth Edition*; Pearson Education, Inc.

Sprick, Randy. (1998). *CHAMPs: A Proactive and Positive Approach to Classroom Management*. Pacific Northwest Publishing Inc., Eugene, OR.

Sprick, R. (2006). *Discipline in the Secondary Classroom*. San Francisco, CA: Josey Bass.

Steckelberg, A., Vasa, S. "Unit 3: Organization and Management of the Classroom." Project PARA. University of Nebraska-Lincoln.

Sugai, G., & Lewis, T. J. (2004). Social skills instruction in the classroom. In E. J. Kame'enui & C. Darch (Eds.). *Instructional classroom management (2nd ed.)* (pp. 152-172). White Plains, NY: Longman.

Sugai, G., Lewis-Palmer, T., & Hagan-Burke, S. (2004). School-wide discipline and instructional classroom management: A systems approach. In E. J. Kame'enui & C. Darch (Eds.). *Instructional classroom management (2nd ed.)* (pp. 218-248). White Plains, NY: Longman.

Sulzer-Azaroff, B., & Mayer, G. R. (1994). *Achieving educational excellence: Behavior analysis for achieving classroom and schoolwide behavior change*. San Marcos, CA: Western Image

Wheeler, J., and Richey, D. (2004). *Behavior Management: Principles and Practices of Positive Behavior Supports Second Edition*; Pearson Education, Inc.

Weinstein, C. (2003). *Secondary classroom management: lessons from research and practice*. New York, NY: McGraw-Hill Companies, Inc.

Wong, H.K., & Wong, R. T. (2005). "How to become an effective teacher-The first days of school." Mountain View, CA: Harry K. Wong Publications, Inc.

Wong, H. K., & Wong, R. T. (1991). *The first days of school: How to be an effective teacher*. Sunnyvale, CA: Harry K. Wong.

Zemelman, S., Daniels, H., and Hyde, A. (2005). *Best Practices: Today's Standards for Teaching & Learning in America's Schools, Third Edition*. Portsmouth, NH: Heinemann.

Section 4: Strategies and Interventions for Individualized Behavioral Support

Alberto, Paul. (2006). *Applied Behavior Analysis for Teachers*. Pearson, Upper Saddle River, New Jersey.

Arnold, D.H. (1997). Co-occurrence of externalizing behavior problems and emergent academic difficulties in young high-risk boys: A preliminary evaluation of patterns and mechanisms. *Journal of Applied Developmental Psychology*, 18(3), 317-330.

Beard-Jordan, K., & Sugai, G. (2004). First Step to Success: An early intervention for elementary children at risk for antisocial behavior. *Behavioral Disorders*, 29, 396-409.

Benazzi, L., Horner, R.H., & Good, R.H. (2006). Effects of behavior support team composition on the technical adequacy and contextual fit of behavior support plans. *Journal of Special Education* 40(3), 160-170.

Blood, Erika & Neel, Richard S. (2007). From FBA To Implementation: A Look At What Is Actually Being Delivered. *Education and Treatment of Children*, 30 (4), 67-80.

Burke, M.D., Hagan-Burke, S., & Sugai, G. (2003). The efficacy of function-based interventions for students with learning disabilities who exhibit escape-maintained problem behavior: Preliminary results from a single case study. *Learning Disabilities Quarterly*, 26, 15-25

Caraulia, A., Steiger, L. (1997). *Nonviolent Crisis Intervention, Learning to Defuse Explosive Behavior*. CPI Publishing, Brookfield, Wisconsin.

Carr, E. G., Horner, R. H., Turnbull, A. P., Marquis, J. G., Magito-McLaughlin, D., McAtee, M. L., et al. (1999). Positive behavior support for people with developmental disabilities: A research synthesis. American Association on Mental Retardation Monograph Series. Washington, D. C.: American Association on Mental Retardation

Cheney, D., Flower, A., Templeton, T. (2008). Applying response to intervention metrics in the social domain for students at risk of developing emotional and behavioral disorders. *Journal of Special Education*, 42, (2) 108-126.

Chafouleas, S., Riley-Tillman, C., Sassu, K., LaFrance, M., Patwa, S., (2007) Daily behavior report cards: An investigation of the consistency of on-task data across raters and methods. *Journal of Positive Behavior Interventions*. 9(1), 30-37.

Colvin, G., Sugai, G., Good, R. H., III, & Lee, Y. (1997). Using active supervision and precorrection to improve transition behaviors in an elementary school. *School Psychology Quarterly*, 12, 344-363.

Cook, B., Landrum, T., Tankersley, M., & Kauffman, J. (2003). Bringing Research to Bear on Practice: Effecting Evidence-Based Instruction for Students with Emotional or Behavioral Disorders. *Education & Treatment of Children*, 26(4), 345-361.

Crone, D., Hawken, L., & Bergstrom, M., (2007). A demonstration of training, implementing and using functional behavioral assessment in 10 elementary and middle school settings. *Journal of Positive Behavior Interventions*, 9(1). 15-29.

Dunlap, G., & Kern, L. (1996). Modifying instructional activities to promote desirable behavior: A conceptual and practical framework. *School Psychology Quarterly*, 11, 297-312.

Elliott, Stephen N. and Gresham, Frank M. (1991) *Social Skills Intervention Guide: Practice Strategies for Social Skills Training*. American Guidance Service, Circle Pines, MN.

Fairbanks, S., Sugai, G., Guardino, D., & Lathrop, M (2007). Response to intervention: Examining classroom behavior support in second grade. *Exceptional Children*, 73(3), 288-310.

Filter, K. J., McKenna, M. K., Benedict, E. A., Horner, R. H., Todd, A. W., & Watson, J. (2007). Check in/ check out: A post-hoc evaluation of an efficient, secondary-level targeted intervention for reducing problem behaviors in schools. *Education and Treatment of Children*, 30(1), 69-84.

Foster-Johnson, L. & Dunlap, G. (1993). Using functional assessment to develop effective, individualized interventions for challenging behaviors. *Teaching Exceptional Children*, 25, 44-50.

Gresham, F.M., Sugai, G. & Horner, R.H. (2001). Interpreting outcomes of social skills training for students with high-incidence disabilities. *Exceptional Children*, 67(3), 331-334.

Gresham, F. M., Sugai, G., & Horner, R. H. (2001). Social competence of students with high-incidence disabilities: Conceptual and methodological issues in interpreting outcomes of social skills training. *Exceptional Children*, 67, 311-344.

Harvey, M.T., Lewis-Palmer, T., Horner, R. H., & Sugai, G. (2003). Trans-situational interventions: Generalization of behavior support across school and home environments. *Behavioral Disorders*, 28, 299-213

Hawken, L. & Horner, R. (2003). Evaluation of a targeted group intervention within a school-wide system of behavior support, *Journal of Behavioral Education*, 12, 225-240.

Hawken, L. S., MacLeod, K. S. & Rawlings, L. (2007). Effects of the Behavior Education Program (BEP) on problem behavior with elementary school students. *Journal of Positive Behavior Interventions*, 9, 94-101.

Hawken, L. (2006). School psychologists as leaders in the implementation of a targeted intervention: The Behavior Education Program (BEP). *School Psychology Quarterly*, 21, 91-111.

Heckaman, K., Conroy, M., Fox, J., & Chait, A. (2000). Functional-assessment based intervention research on students with or at risk for emotional and behavioral disorders in school setting. *Behavioral Disorders*, 25(3), 196-210.

Henley, Martin (2003). *Teaching Self-Control, A Curriculum for Responsible Behavior*. National Education Service, Bloomington, IN.

Horner, R. H., Albin, R. W., Sprague, J. R., & Todd, A. W. (1999). Positive behavior support. In M. E. Snell & F. Brown (Eds.), *Instruction of students with severe disabilities* (5th ed., pp. 207-243). Upper Saddle River, NJ: Merrill/Prentice Hall.

Horner, R.H., Sugai, G., Todd, A.W., & Lewis-Palmer, T. (2005). School-wide positive behavior support. In L. Bambara & L. Kern (Eds.) *Individualized supports for students with problem behaviors: Designing positive behavior plans.* (pp. 359-390) New York: Guilford Press

Ingram, K., Lewis-Palmer, T., & Sugai, G. (2005). Function-based intervention planning: Comparing the effectiveness of FBA indicated and contra-indicated intervention plans. *Journal of Positive Behavior Interventions*, 7, 224-236

Kamps, D., Kravits, T., Stolze, J., & Swaggart, B. (1999). Prevention Strategies for At-Risk Students and Students with EBD in Urban Elementary Schools. *Journal of Emotional and Behavioral Disorders*, 7(3), 178-188.

Kern, L., Childs, K.E., Dunlap, G., Clarke, S. et al. (1994). Using assessment based curricular intervention to improve the classroom behavior of a student with emotional and behavioral challenges. *Journal of Applied Behavior Analysis*, 27(1), 7-19.

Kerr, M. M., & Nelson, C. M. (2002). *Strategies for managing problem behaviors in the classroom* (3rd ed.). Columbus, OH: Merrill.

Lambert, N.M. (1995). Seating arrangements. In L.W. Anderson (Ed.) *International encyclopedia of teaching and teacher education* (2nd ed.) Oxford: Elsevier Science.

Lane, K. L., Wehby, J., Menzies, H. M., Doukas, G. L., Munton, S. M., & Gregg, R. M. (2003). Social skills instruction for students at risk for antisocial behavior: The effects of small-group instruction. *Behavioral Disorders*, 28(3), 229-248.

Lane, K.L., Gresham, F.M., O'Shaughnessy, T.E.(2002). Serving students with or at-risk for emotional and behavioral disorders: Future challenges. *Education and Treatment of Children*, 25(4),507-521.

Lewis, T. J., Hudson, S.; Richter, M.; (2004) Behavioral disorders, scientifically supported practices in emotional and behavioral disorders: A proposed approach and brief review of current practices. *Behavioral Disorders*, 29(3), 247-259.

Lewis, T. J., & Newcomer, L., Kelk, M., & Powers, L. (2000). Preventing and addressing aggressive and violent behavior through individual systems of positive behavioral support. *Reaching Today's Youth*, 5, 37-41.

Lewis, T. J. (1994). A Comparative Analysis of the Effects of Social Skills Training and Teacher Directed Contingencies on the Generalized Social Behavior of Pre-school Children with Disabilities. *Journal of Behavioral Education*, 4, 267-281.

Lucyshyn, J., Albin, R., Horner, R.H., Mann, J. C., Mann, J.A. & Wadsworth, G. (2007). Family Implementation of Positive Behavior Support with a Child with Autism: A Longitudinal, Single Case Experimental and Descriptive Replication and Extension. *Journal of Positive Behavior Interventions* 9(3), 131-150

March, R. E., & Horner, R.H. (2002). Feasibility and contributions of functional behavioral assessment in schools. *Journal of Emotional and Behavioral Disorders*, 10, 158-170.

Martin, G, & Pear, J. (2007). *Behavior Modification: What Is It and How To Do It.* Upper River Saddle, NJ: Pearson.

- McCurdy, B. L., Kunsch, C., & Reibstein, S. (2007). Secondary prevention in the urban school: Implementing the Behavior Education Program. *Preventing School Failure*, 12-19.
- McIntosh, K., Campbell, A., Carter, D., & Dickey, C. (2009). Differential effects of a tier 2 behavioral intervention based on function of problem behavior. *Journal of Positive Behavior Interventions*, 11, 2. 82-93.
- Meyer, K. (1999). Functional analysis and treatment of problem behavior exhibited by elementary school children. *Journal of Applied Behavior Analysis*, 32(2), 229-232.
- Meyer L.H., and Evans, I.M. (1989). *Nonaversive intervention for behavior problems*. Baltimore, MD: Paul Brookes Publishing Co.
- Moote, G., Smyth, N.J., & Wodarski, J.S. (1999). Social Skills Training With Youth in School Settings: A Review. *Research on Social Work Practice*, 9, 427-465.
- Nelson, J., Lott, L, and Glenn, H.S. (2007). *Positive Discipline A-Z*. Three Rivers Press, New York, New York.
- Newcomer, L.L. & Lewis, T.J. (2004). Functional Behavioral Assessment: An Investigation of Assessment Reliability and Effectiveness of Function-Based Interventions. *Journal of Emotional and Behavioral Disorders* 12(3), 168-181
- O'Leary, D.K. & Becker, W.C. (1967). Behavior modification of an adjustment class: a token reinforcement program. *Exceptional Children*, 33(9), 637-642.
- Preciado, J., Horner, R.H., & Baker, S. (2009). Using a function-based approach to decrease problem behavior and increase academic engagement for Latino English Language Learners. *Journal of Special Education*. 42 (4) 227-240.
- Reid, R., Gonzalez, J.E., Nordness, P.D., Trout, A., & Epstein, M.E. (2004). A meta-analysis of the academic status of students with emotional and behavioral disorders. *Journal of Special Education*, 38(3), 130-143.
- Repp, A. C. & Horner, R. H (1999). *Functional analysis of problem behavior: From effective assessment to effective support*. Belmont, CA: Wadsworth Publishing.
- Sailor, W., Guess, D., & Lavis, L. W. (1975). Training teachers for education of the severely handicapped. *Education and Training of the Mentally Retarded*, 10(3).
- Scott, T. M., & Caron, D. (2006). Functional Behavior Assessment at the School-Wide Level: Determining Predictability and Function of Typical Problem Behaviors. *Preventing School Failure* 50(1), 13-20
- Scott, T. M., Liaupsin, C., & Nelson, C. M., & McIntyre, J. (2005). Team-Based Functional Behavior Assessment as a Proactive Public School Process: A Descriptive Analysis of Current Barriers. *Journal of Behavioral Education* 14(1), 57-71
- Scott, T. M., McIntyre, J., Liaupsin, C., Nelson, C. M., Conroy, M., & Payne, L. (2005). An Examination of the Relation Between Functional Behavior Assessment and Selected Intervention Strategies with School-Based Teams. *Journal of Positive Behavior Interventions*, 7(4), 205-215.

Seivert, T. (2008) Classroom arrangement: Alternative Style Classrooms. Huntington College, Huntington, Indiana.

Shinn, M.R., Walker, H.M., and Stoner, G. (2002). Interventions for Academic and Behavior Problems II: Preventive and Remedial Approaches. National Association of School Psychologists. Bethesda, M.D.

Stichter, Janine P., Sasso, Gary M. & Jolivet, Kristine. (2004). Structural Analysis and Intervention in School Setting: Effects on Problem Behavior for a Student with an Emotional/Behavioral Disorder. *Journal of Positive Behavior Interventions*, 6 (3) 166-177.

Todd, Anne W., Campbell, Amy L., Meyer, Gwen G., & Horner, Robert H. (2008). The Effects of a Targeted Intervention to Reduce Problem Behaviors. *Journal of Positive Behavior Interventions*, 10 (1), 46-55.

Trout, A. L., Nordness, P. D., Pierce, C. D., & Epstein, M. H. (2003). Research on the academic status of children and youth with emotional and behavioral disorders: A review of the literature from 1961-2000. *Journal of Emotional and Behavioral Disorders*, 11, 198-210.

Walker, H. M., Colvin, G., Ramsey, E. (1995). *Antisocial behavior in school: Strategies and best practices*. Pacific Grove, CA: Brooks/Cole Publishing.

Walker, H.M. (1997). *The acting-out child: Coping with classroom disruption*. Longmont, CO: SoprisWest. Walker, H.M., & Walker, J.E. (1991). *Coping with noncompliance in the classroom: A positive approach for teachers*. Austin, TX: Pro-Ed, Inc.

Wannarka, R.; Kathy, R. (2008) Seating arrangements that promote positive academic and behavioral outcomes: a review of empirical research. *Support for Learning*; 23 (2), 89-93.

Wehby, J.H Lane, K. L. & Falk, K.B. (2003). Academic instruction for students with emotional and behavioral disorders. *Journal of Emotional and Behavioral Disorders*, 11(4), 194-197.

Wehby, J. H., Symons, F., & Shores, R. E. (1995). A descriptive analysis of aggressive behavior in classrooms for students with emotional and behavioral disorders. *Behavioral Disorders*, 20, 87-105.

Wright, D.B. and Gurman, H.G.(1994) *Positive Intervention for Serious Behavior Problems: Best Practices in Implementing the Hughes Bill and the Positive Intervention Regulations*. Sacramento, CA: Resources in Special Education.



Contact Us

For more information:

WEB:

<http://psiwaresolutions.com>

TOLL FREE:

877-411-7360

E-MAIL:

review360@pearson.com